

ROUGH TERRAIN CRANE

GR-250N

JAPANESE SPECIFICATIONS

GR

OUTLINE	SPEC. NO.
4-section Boom, 2-staged Power Tilt Jib X-type Outrigger	GR-250N-1-00101

Control No. GR-250N-1-00101 / JA-04

GR-250N

CRANE SPECIFICATIONS

CRANE CAPACITY

9.5m Boom	25,000kg	at 3.5m	(8part-line)
16.5m Boom	19,000kg	at 4.0m	(6part-line)
23.5m Boom	12,500kg	at 5.0m	(4part-line)
30.5m Boom	7,000kg	at 8.0m	(4part-line)
8.0m Jib	3,000kg	at 72 °	(1part-line)
13.0m Jib	2,000kg	at 76 °	(1part-line)
Single top	3,500kg		(1part-line)

MAX.LIFTING HEIGHT

Boom	31.3m
Jib	44.2m

MAX.WORKING RADIUS

Boom	28.0m
Jib	35.0m

BOOM LENGTH

9.5m – 30.5m

BOOM EXTENSION

21.0m

BOOM EXTENSION SPEED

21.0m/90s

JIB LENGTH

8.0m, 13.0m

MAIN WINCH SINGLE LINE WINDING SPEED

120m/min (4th layer)

MAIN WINCH HOOK SPEED

15.0m/min (8 part-line)

AUXILIARY WINCH SINGLE LINE WINDING SPEED

120m/min (4th layer)

AUXILIARY WINCH HOOK SPEED

120m/min (1 part-line)

BOOM ELEVATION ANGLE

0 °~ 83 °

BOOM ELEVATION SPEED

0 °~ 83 °/45s

SWING ANGLE

360 °continue

SWING SPEED

2.6min⁻¹ (rpm)

WIRE ROPE

Main Winch

16mm x 170m (Diameter x Length)
Spin-resistant wire rope

Auxiliary Winch

16mm x 98m (Diameter x Length)
Spin-resistant wire rope

BOOM

4-section hydraulically telescoping boom of hexagonal box construction
(stage 2: sequential; stages 3,4: synchronized)

BOOM EXTENSION

2 double-acting hydraulic cylinders
1 wire rope type telescoping device

JIB

Quick-turn type (2-staged type which stores alongside below the base boom section and extendible from under the boom (with 2nd stage being a pull-out type))
Hydraulic non-stage offset (5 °~ 45 °) type

SINGLE TOP

Single sheave. Mounted on main boom head for single line work.

HOIST

Driven by hydraulic motor and via spur gear reducer.
With free-fall device.
Automatic brake (with foot brake for free-fall device)
2 single winches
With flow regulator valve with pressure compensation

BOOM ELEVATION

1 double-acting hydraulic cylinder
With flow regulator valve with pressure compensation

SWING

Hydraulic motor driven planetary gear reducer
Swing bearing
Swing free/lock changeover type
Negative brake

OUTRIGGERS

Fully hydraulic X-type (floats mounted integrally)
Slides and jacks each provided with independent operation device.
Fully extended width 6.3m
Middle extended width 5.9m, 5.0m, 3.6m
Minimum extended width 3.1m

OPERATION METHOD

Hydraulic pilot valve operation

MAX. VERTICAL LOAD CAPACITY OF OUTRIGGER

26.8t

POWER TAKE-OFF

PTO wet multi-plate clutch

HYDRAULIC PUMPS

2 variable piston pumps
3 gear pumps

HYDRAULIC OIL TANK CAPACITY

380 liters

SAFETY DEVICES

Automatic moment limiter (AML)
Swing automatic stop device
Elevation slow down and stop device
Over-winding cutout device
Working area control device
Free-fall interlock device
Outrigger extension width detector
Winch drum lock (Main winch is optional)
Level gauge
Hook safety latch
Hydraulic safety valve
Telescopic counterbalance valve
Elevation counterbalance valve
Power tilt counterbalance valve
Jack pilot check valve
Swing lock

EQUIPMENT

Air-conditioner with dehumidifier
Hydraulic oil temperature indication lamp
Radio
Oil cooler
Visual-type winch drum rotation indicator
Operation pedals
ISO arrangement: for telescoping/auxiliary hoisting
TADANO arrangement: for elevating/telescoping
Television (option)

CARRIER SPECIFICATIONS

ENGINE

Model MITSUBISHI 6M60 - TLE2A
(with turbo charger and air cooler)
Type 4-cycle, 6-cylinder, direct-injection, water-cooled
diesel engine
Piston displacement 7,545 liters
Max. output 200kW {272PS} at 2,700min⁻¹{rpm}
Max. torque 785N·m {80.0kgf·m} at 1,400min⁻¹{rpm}

TORQUE CONVERTER

3-element, 1-stage unit (with automatic lock-up
mechanism)

TRANSMISSION

Automatic and manual transmission
Power shift type (wet multi-plate clutch)
4 forward and 1 reverse speeds (with Hi/Low settings)

REDUCER

Axle dual-ratio reduction

DRIVE

2-wheel drive (4X2) / 4-wheel drive (4X4) selection

FRONT AXLE

Full floating type

REAR AXLE

Full floating type

SUSPENSION

Front

Hydro-pneumatic suspension (with hydraulic lock cylinder)

Rear

Hydro-pneumatic suspension (with hydraulic lock cylinder)

STEERING

Fully hydraulic power steering
With reverse steering correction mechanism

BRAKE SYSTEM

Service Brake

Air and hydraulic combined type front and rear disk brakes

Parking Brake

Mechanically operated, internal expanding duo-servo
shoe type acting on drum at transmission case rear.

Auxiliary Brake

Hydrodynamic retarder

Electro-pneumatic operated exhaust brake

Auxiliary braking device for operations

FRAME

Welded box-shaped structure

ELECTRIC SYSTEM

24 V DC. 2 batteries of 12V-120Ah

FUEL TANK CAPACITY

300 liters

TIRES

Front 385/95R25 170E ROAD

Rear 385/95R25 170E ROAD

CAB

One-man type

With interior equipment

Liquid filled rubber mounted type

Fully adjustable foldable seat

(with headrest, armrest and seat belt)

Adjustable handle (tilt, telescoping)

Intermittent type windshield/roof wiper (with washer)

Power window

Side visor

SAFETY DEVICES

Emergency steering device

Suspension lock device

Rear wheel steering lock device

Engine over-run alarm

Overshift prevention device

Parking brake alarm

Mirror for right side of boom (Electric type is optional)

Monitor TV for left side of boom

EQUIPMENT

Centralized oiling device

Electric mirror

GENERAL DATA

DIMENSIONS

Overall length	11,130mm
Overall width	2,620mm
Overall height	3,455mm
Wheel base	3,500mm
Tread Front	2,170mm
Rear	2,170mm

WEIGHTS

Gross vehicle weight	
Total	26,495kg
Front	13,250kg
Rear	13,245kg

PERFORMANCE

Max. traveling speed	49km/h
Gradeability (tan ⁻¹)	0.57
Min. turning radius	5.0m (4-wheel steering) 8.4m (2-wheel steering)

Note:

This crane is covered by Class C Conditions under the
Basic Running Conditions of the Road Traffic Act.

TOTAL RATED LOADS CHART

(1) With outriggers
[BOOM]

Unit: ton				
Outriggers fully extended (6.3 m) -360 °				
Working radius \ Boom length	9.5m	16.5m	23.5m	30.5m
2.5 m	25.0	19.0	12.5	
3.0 m	25.0	19.0	12.5	
3.5 m	25.0	19.0	12.5	7.0
4.0 m	23.0	19.0	12.5	7.0
4.5 m	21.2	18.0	12.5	7.0
5.0 m	19.4	16.7	12.5	7.0
5.5 m	17.8	15.6	11.85	7.0
6.0 m	16.3	14.6	11.2	7.0
6.5 m	15.1	13.8	10.6	7.0
7.0 m	13.7	13.0	10.1	7.0
8.0 m		10.55	9.1	7.0
9.0 m		8.5	8.2	6.4
10.0 m		7.05	7.4	5.9
11.0 m		5.85	6.4	5.35
12.0 m		4.95	5.5	4.9
13.0 m		4.2	4.75	4.5
14.0 m		3.6	4.1	4.15
15.0 m			3.6	3.85
16.0 m			3.15	3.45
17.0 m			2.8	3.05
18.0 m			2.45	2.7
19.0 m			2.15	2.45
20.0 m			1.9	2.2
21.0 m			1.7	1.95
22.0 m				1.75
24.0 m				1.4
26.0 m				1.15
28.0 m				0.95
A (°)	0 ~ 83			

Unit: ton				
Outriggers middle extended (5.9 m) -Over sides-				
Working radius \ Boom length	9.5m	16.5m	23.5m	30.5m
2.5 m	25.0	19.0	12.5	
3.0 m	25.0	19.0	12.5	
3.5 m	25.0	19.0	12.5	7.0
4.0 m	23.0	19.0	12.5	7.0
4.5 m	21.2	18.0	12.5	7.0
5.0 m	19.4	16.7	12.5	7.0
5.5 m	17.8	15.6	11.85	7.0
6.0 m	16.3	14.6	11.2	7.0
6.5 m	15.1	13.8	10.6	7.0
7.0 m	13.0	12.6	10.1	7.0
8.0 m		9.7	9.1	7.0
9.0 m		7.7	8.2	6.4
10.0 m		6.3	7.0	5.9
11.0 m		5.2	6.0	5.35
12.0 m		4.35	5.1	4.9
13.0 m		3.7	4.35	4.5
14.0 m		3.15	3.8	4.05
15.0 m			3.3	3.6
16.0 m			2.85	3.15
17.0 m			2.5	2.75
18.0 m			2.2	2.45
19.0 m			1.95	2.2
20.0 m			1.7	1.95
21.0 m			1.5	1.75
22.0 m				1.55
24.0 m				1.2
26.0 m				0.95
27.9 m				0.75
A (°)	0 ~ 83			

A= Boom angle range (for the unladen condition)

[BOOM]

Unit: ton

Outriggers middle extended (5.0 m) –Over sides–				
Working radius \ Boom length	9.5m	16.5m	23.5m	30.5m
2.5 m	25.0	19.0	12.5	
3.0 m	25.0	19.0	12.5	
3.5 m	25.0	19.0	12.5	7.0
4.0 m	23.0	19.0	12.5	7.0
4.5 m	21.2	18.0	12.5	7.0
5.0 m	18.4	16.7	12.5	7.0
5.5 m	15.4	15.0	11.85	7.0
6.0 m	13.0	12.6	11.2	7.0
6.5 m	11.2	10.8	10.6	7.0
7.0 m	9.5	9.4	10.1	7.0
8.0 m		7.3	8.0	7.0
9.0 m		5.85	6.5	6.4
10.0 m		4.75	5.4	5.6
11.0 m		3.9	4.55	4.8
12.0 m		3.3	3.85	4.15
13.0 m		2.75	3.3	3.55
14.0 m		2.3	2.85	3.1
15.0 m			2.45	2.7
16.0 m			2.1	2.35
17.0 m			1.8	2.1
18.0 m			1.55	1.8
19.0 m			1.35	1.6
20.0 m			1.15	1.4
21.0 m			0.95	1.2
22.0 m				1.05
24.0 m				0.75
26.0 m				0.5
A (°)		0 ~ 83		20 ~ 83

Unit: ton

Outriggers middle extended (3.6 m) –Over sides–				
Working radius \ Boom length	9.5 m	16.5m	23.5m	30.5m
2.5 m	25.0	19.0	12.5	
3.0 m	25.0	19.0	12.5	
3.5 m	20.5	19.0	12.5	7.0
4.0 m	16.0	15.7	12.5	7.0
4.5 m	12.8	12.6	12.5	7.0
5.0 m	10.7	10.5	11.0	7.0
5.5 m	9.05	8.8	9.4	7.0
6.0 m	7.7	7.6	8.2	7.0
6.5 m	6.6	6.5	7.25	7.0
7.0 m	5.8	5.6	6.4	6.5
8.0 m		4.4	5.05	6.5
9.0 m		3.4	4.05	4.35
10.0 m		2.7	3.3	
11.0 m		2.15	2.75	
12.0 m		1.7	2.3	
13.0 m		1.3	1.9	
14.0 m		1.0	1.6	
15.0 m			1.3	1
16.0 m			1.05	1
17.0 m			0.85	1
18.0 m			0.65	0
19.0 m			0.5	0.
20.0 m				0.
A (°)		0 ~ 83	20 ~ 83	42 ~

Unit: ton

Outriggers minimum extended (3.1 m) –Over sides–				
Working radius \ Boom length	9.5 m	16.5m	23.5m	30.5m
2.5 m	18.0	14.2	12.2	
3.0 m	18.0	14.2	12.2	
3.5 m	14.5	14.2	12.2	7.0
4.0 m	11.6	11.25	12.2	7.0
4.5 m	9.5	9.15	10.05	7.0
5.0 m	7.9	7.65	8.45	7.0
5.5 m	6.75	6.45	7.25	7.0
6.0 m	5.75	5.5	6.25	6.5
6.5 m	5.0	4.75	5.45	5.7
7.0 m	4.25	4.1	4.8	5.0
8.0 m		3.0	3.8	4.0
9.0 m		2.2	3.0	3.2
10.0 m		1.6	2.4	2.6
11.0 m		1.1	1.9	2.1
12.0 m		0.7	1.5	1.7
13.0 m			1.1	1.4
14.0 m			0.8	1.1
15.0 m				0.8
16.0 m				0.6
A (°)	0 ~ 83	21 ~ 83	40 ~ 83	54 ~ 83

A= Boom angle range (for the unladen condition)

[JIB]

Unit:ton

Outriggers fully extended (6.3 m)													-360 °-
Jib length	30.5 m boom + 8.0 m jib						30.5 m boom + 13.0 m jib						
Offset	5°		25°		45°		5°		25°		45°		
Boom angle	Working radius (m)	Total rated loads (t)	Working radius (m)	Total rated loads (t)	Working radius (m)	Total rated loads (t)	Working radius (m)	Total rated loads (t)	Working radius (m)	Total rated loads (t)	Working radius (m)	Total rated loads (t)	
83°	4.3	3.0	6.9	2.1	8.9	1.6	5.7	2.0	10.0	1.2	13.0	0.8	
76°	9.5	3.0	11.8	2.1	13.5	1.6	11.7	2.0	15.5	1.2	18.1	0.8	
72°	12.3	3.0	14.4	2.1	15.9	1.6	14.6	1.75	18.4	1.1	20.5	0.8	
70°	13.6	2.8	15.6	2.1	17.0	1.6	16.1	1.65	19.7	1.05	21.8	0.8	
65°	16.6	2.35	18.5	1.8	19.7	1.5	19.6	1.4	22.8	0.95	24.5	0.75	
60°	19.6	2.0	21.2	1.55	22.1	1.35	22.8	1.2	25.8	0.9	27.0	0.75	
55°	22.2	1.45	23.7	1.35	24.4	1.2	25.9	1.05	28.5	0.85	29.4	0.74	
50°	24.6	1.05	26.0	1.0	26.5	0.95	28.6	0.85	31.0	0.75	31.5	0.7	
45°	26.9	0.75	28.1	0.7	28.3	0.7	31.1	0.6	33.1	0.55	33.3	0.55	
40°	29.0	0.55	29.9	0.5			33.3	0.4	35.0	0.4			
35°	30.8	0.38	31.6	0.35									
A (°)	34 ~ 83				44 ~ 83				39 ~ 83				44 ~ 83

A= Boom angle range (for the unladen condition)

Unit:ton

Outriggers middle extended (5.9 m)													-Over sides-
Jib length	30.5 m boom + 8.0 m jib						30.5 m boom + 13.0 m jib						
Offset	5°		25°		45°		5°		25°		45°		
Boom angle	Working radius (m)	Total rated loads (t)	Working radius (m)	Total rated loads (t)	Working radius (m)	Total rated loads (t)	Working radius (m)	Total rated loads (t)	Working radius (m)	Total rated loads (t)	Working radius (m)	Total rated loads (t)	
83°	4.3	3.0	6.9	2.1	8.9	1.6	5.7	2.0	10.0	1.2	13.0	0.8	
76°	9.5	3.0	11.8	2.1	13.5	1.6	11.7	2.0	15.5	1.2	18.1	0.8	
72°	12.3	3.0	14.4	2.1	15.9	1.6	14.6	1.75	18.4	1.1	20.5	0.8	
70°	13.6	2.8	15.6	2.1	17.0	1.6	16.1	1.65	19.7	1.05	21.8	0.8	
65°	16.6	2.35	18.5	1.8	19.7	1.5	19.6	1.4	22.8	0.95	24.5	0.78	
60°	19.5	1.85	21.2	1.55	22.1	1.35	22.8	1.2	25.8	0.9	27.0	0.75	
55°	22.1	1.3	23.7	1.15	24.4	1.1	25.9	1.05	28.5	0.85	29.4	0.74	
50°	24.5	0.9	25.9	0.85	26.5	0.8	28.6	0.7	30.9	0.6	31.5	0.6	
45°	26.8	0.6	28.0	0.55	28.3	0.55	31.0	0.5	33.0	0.4	33.3	0.4	
40°	28.9	0.4	29.9	0.35			33.3	0.3					
A (°)	39 ~ 83				44 ~ 83				39 ~ 83				44 ~ 83

A= Boom angle range (for the unladen condition)

[JIB]

Unit : ton

Outriggers middle extended (5.0 m) --Over sides--												
Jib length	30.5 m boom + 8.0 m jib						30.5 m boom + 13.0 m jib					
Offset	5°		25°		45°		5°		25°		45°	
Boom angle	Working radius (m)	Total rated loads (t)	Working radius (m)	Total rated loads (t)	Working radius (m)	Total rated loads (t)	Working radius (m)	Total rated loads (t)	Working radius (m)	Total rated loads (t)	Working radius (m)	Total rated loads (t)
83°	4.3	3.0	6.9	2.1	8.9	1.6	5.7	2.0	10.0	1.2	13.0	0.8
76°	9.5	3.0	11.8	2.1	13.5	1.6	11.7	2.0	15.5	1.2	18.1	0.8
72°	12.3	3.0	14.4	2.1	15.9	1.6	14.6	1.75	18.4	1.1	20.5	0.8
70°	13.6	2.8	15.6	2.1	17.0	1.6	16.1	1.65	19.7	1.05	21.8	0.8
65°	16.5	2.0	18.5	1.7	19.7	1.5	19.6	1.4	22.8	0.95	24.5	0.78
60°	19.3	1.3	21.0	1.15	22.1	1.1	22.7	1.0	25.8	0.9	27.0	0.75
55°	21.8	0.8	23.5	0.75	24.3	0.75	25.7	0.65	28.4	0.6	29.4	0.5
50°	24.3	0.5	25.8	0.45	26.4	0.45	28.3	0.4	30.8	0.35	31.4	0.3
A (°)	49 ~ 83						49 ~ 83					

A= Boom angle range (for the unladen condition)

Unit : ton

Outriggers middle extended (3.6 m) --Over sides--												
Jib length	30.5 m boom + 8.0 m jib						30.5 m boom + 13.0 m jib					
Offset	5°		25°		45°		5°		25°		45°	
Boom angle	Working radius (m)	Total rated loads (t)	Working radius (m)	Total rated loads (t)	Working radius (m)	Total rated loads (t)	Working radius (m)	Total rated loads (t)	Working radius (m)	Total rated loads (t)	Working radius (m)	Total rated loads (t)
83°	4.4	3.0	6.9	2.1	8.9	1.6	5.7	2.0	10.0	1.2	13.0	0.8
76°	9.5	3.0	11.8	2.1	13.5	1.6	11.7	2.0	15.5	1.2	18.1	0.8
72°	12.0	2.2	14.3	1.8	15.9	1.6	14.6	1.75	18.4	1.1	20.5	0.8
70°	13.2	1.8	15.4	1.5	16.9	1.35	15.9	1.4	19.7	1.05	21.8	0.8
65°	16.1	1.0	18.1	0.9	19.4	0.8	19.1	0.8	22.6	0.65	24.4	0.55
60°	18.9	0.5	20.7	0.45	21.8	0.4	22.2	0.4	25.3	0.35	26.8	0.3
A (°)	59 ~ 83						59 ~ 83					

A= Boom angle range (for the unladen condition)

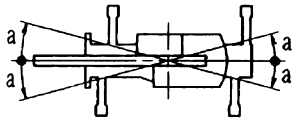
PRECAUTIONS TO BE TAKEN WHEN THE OUTRIGGERS ARE EXTENDED:

1. The total rated loads shown are for the case where the crane is set horizontally on firm level ground. They include the weights of the slings and hooks (Main hook: 220 kg, auxiliary hook: 60 kg).
The values above the bold lines are based on the crane strength while those below are based on the crane stability.
2. Since the working radii are based on the actual values including the deflection of the boom, operations should be performed in accordance with the working radii.
3. Jib operations should be performed in accordance with the boom angle, irrespective of the boom length. The working radii are reference values for the case where the jib is mounted on a 30.5m boom.
4. The total rated load for the single top shall be the value obtained by subtracting the weight of the hook mounted on the boom from the total rated load of the boom and must not exceed 3.5t.
5. As a rule, free-fall operation should be performed only when lowering the hook alone. If a hoisted load must be lowered by free-fall operation, the load must be kept below 1/5th of the total rated load and sudden braking operations must be avoided.
6. The table below shows the standard number of part lines for each boom length. When using with other than this number of part lines, the load per line should not exceed 3.17t for the main winch, and 3.5t for the auxiliary winch..

Boom length	9.5 m	16.5 m	23.5 m	30.5 m	Jib/Single top
Number of part lines	8	6	4	4	1

7. The hoisting performance for the "Over sides" range will differ according to the extended width of the outriggers. Operations should be performed in accordance with the performance corresponding to the extended width. Also, although the hoisting performances for the "Over front" and "Over rear" ranges are equivalent to those of the "outriggers fully extended" condition, the front and rear ranges (angle a) will differ according to the width to which the outriggers are extended in the left and right directions.

Extended width	Middle extended (5.9 m)	Middle extended (5.0 m)	Middle extended (3.6 m)	Minimum extended (3.1 m)
Angle a °	35	25	15	5



(2) Without outriggers

Unit: ton

Working radius (m)	Stationary						Travelling at 1.6km/h or less									
	9.5 m boom		16.5 m boom		23.5 m boom		9.5 m boom		16.5 m boom		23.5 m boom					
	Front	-360 °	Front	-360 °	Front	-360 °	Front	-360 °	Front	-360 °	Front	-360 °				
3.0	14.0	9.0	9.0	7.3			10.5	7.0	7.5	5.1						
3.5	14.0	7.6	9.0	7.3	6.5	4.5	10.5	6.2	7.5	5.1	5.5	3.2				
4.0	12.5	6.3	9.0	5.85	6.5	4.5	9.5	5.3	7.5	4.9	5.5	3.2				
4.5	10.9	5.2	9.0	4.75	6.5	4.5	8.7	4.4	7.5	3.95	5.5	3.2				
5.0	9.55	4.3	8.2	4.0	6.5	4.3	8.0	3.6	7.0	3.3	5.5	3.2				
5.5	8.3	3.6	7.4	3.3	6.1	3.7	6.9	3.0	6.2	2.7	5.15	3.2				
6.0	7.2	3.0	6.6	2.8	5.65	3.2	5.9	2.5	5.5	2.3	4.8	2.7				
6.5	6.25	2.5	5.9	2.35	5.25	2.75	5.1	2.1	4.9	1.9	4.45	2.7				
7.0	5.2	2.0	5.25	1.95	4.85	2.4	4.3	1.7	4.35	1.6	4.15	2.7				
8.0			4.1	1.4	4.1	1.8			3.4	1.1	3.5	1.5				
9.0			3.25	0.95	3.5	1.4			2.7	0.7	2.95	1.5				
10.0			2.6	0.6	3.0	1.05			2.15		2.45	0.8				
11.0			2.1		2.55	0.75			1.7		2.05	0.6				
12.0			1.7		2.2				1.35		1.7					
13.0			1.35		1.85				1.1		1.45					
14.0			1.0		1.55				0.8		1.2					
15.0					1.3						1.0					
16.0					1.05						0.85					
17.0					0.85						0.7					
18.0					0.65						0.55					
19.0					0.5											
A (°)	0 ~ 77		42 ~ 77		26 ~ 77		56 ~ 77		77 0 ~ 77		48 ~ 77		31 ~ 77		57 ~ 77	

A= Boom angle range (for the unladen condition)

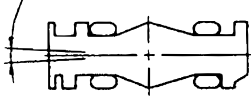
PRECAUTIONS TO BE TAKEN WHEN THE OUTRIGGERS ARE NOT USED:

1. The total rated loads shown are for the case where the tire air pressure on firm level ground is as specified (900kPa {9.00kgf/cm²}) and the suspension-lock cylinder is retracted as much as possible. They include the weights of the slings and hooks (Main hook: 220 kg, auxiliary hook: 60 kg).
The values above the bold lines are based on the crane strength while those below are based on the crane stability. The foundation, working conditions, etc. should be taken into consideration for actual work.
2. Since the working radii are based on the actual values including the deflection of the boom and the tires, operations should be performed in accordance with the working radii.
3. The table below shows the standard number of part lines for each boom length. When using with other than this number of part lines, the load per line should not exceed 3.17t for the main winch, and 3.5t for the auxiliary winch.

Boom length	9.5 m	16.5 m	23.5 m	Single top
Number of part lines	6	4	4	1

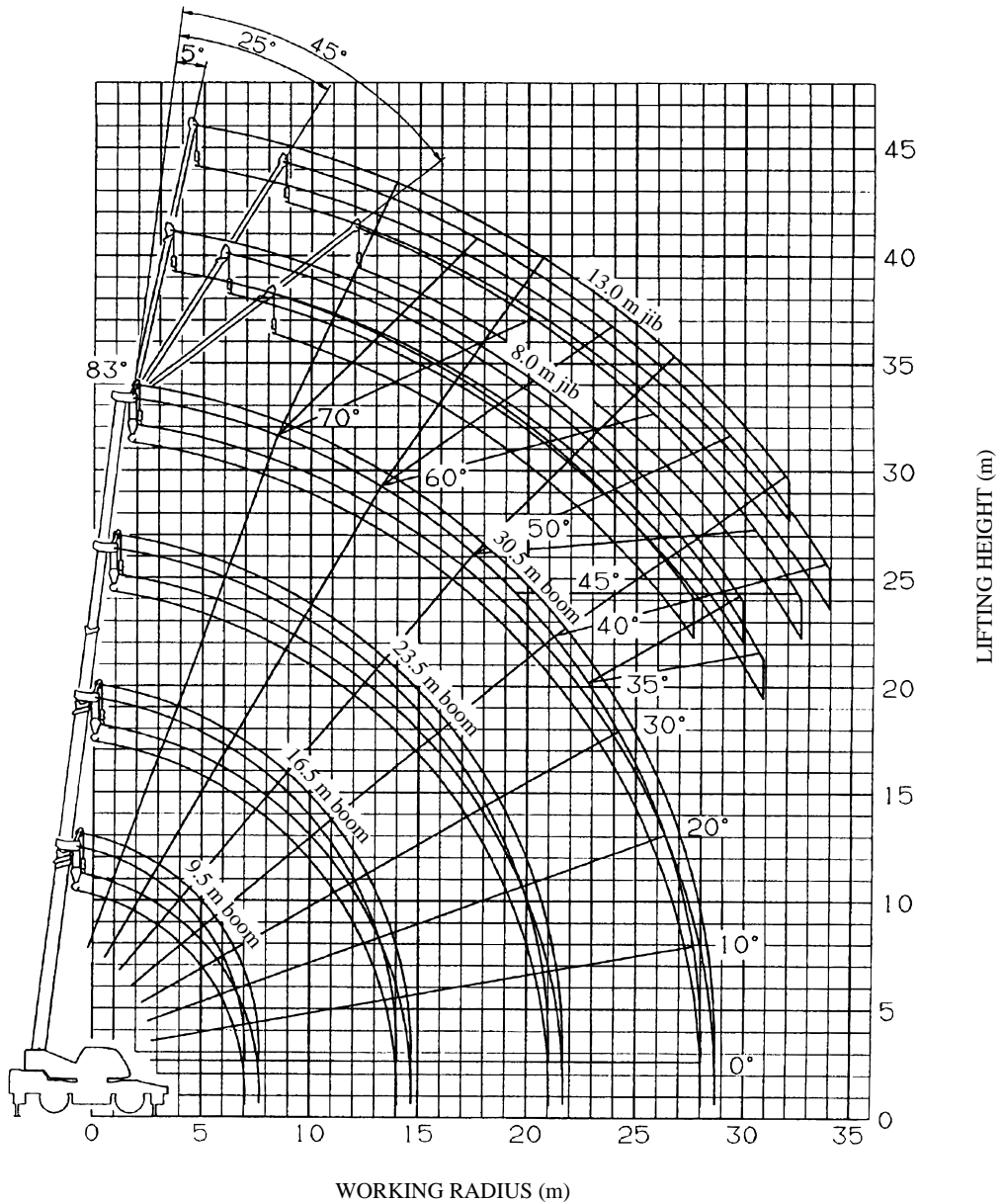
4. "Over front" crane operations should be performed only when the AML "over-front area indicator lamp" is lit. The boom must be kept inside a 2 ° area over front of the carrier when performing "Over front" crane operations without the outriggers.

Approx. 2 °



5. The total rated load for the single top shall be the value obtained by subtracting the weight of the hook mounted on the boom from the total rated load of the boom and must not exceed 3.5t.
6. Free-fall operations should not be performed without outriggers.
Booms over 23.5m in length and jibs should not be used without outriggers.
7. The "Drive Mode Selection" switch should be set to "4-wheel / Lo" for travelling while hoisting a load and the shift lever should be set to first.
8. When travelling while hoisting a load, the swing brake should be applied, the load should be kept as close to the ground as possible but not touching the ground and the speed should be kept at 1.6km/h or less. In particular, any abrupt steering, starting or braking must be avoided.
9. Crane operations should not be performed when travelling while hoisting a load.

WORKING RADIUS - LIFTING HEIGHT



NOTES:

1. The deflection of the boom is not incorporated in the figure above.
2. The figure above is for the case where the outriggers are fully extended (360 °).

DIMENSIONS (1/100)

